



Aluminum Parapet Clamp



Description

Made to clamp onto structural parapet walls up to 33 in. thick. Designed for use with suspended scaffolding (for suspension as well as tiebacks, except in Canada), or as an anchorage point for lifelines (5000 lb ultimate load) where allowed by local regulations. Added padding protects top and front of parapet wall. A second Hanger Strap can be added to attach an auxiliary wire rope for added safety.

Specifications

Part No.: 920152

Load Capacity: 1500 lb

(incl. 4:1 safety factor)

5000 lb ultimate load for use with lifeline

Outreach: 16, 20 or 24 in.

Max. Throat Opening: 33 in.

Dimensions: 62x27.56x12 in. (LxHxW)

Weight: 48 lb

Construction: Aluminum



Aluminum Parapet Clamp

Table of Contents

1. Description and Specifications	Page 1
2. Table of Contents	2
3. General Warning	3
4. Parts List	4
5. Dimensions	5
6. Parapet Loads	6
7. Installation Instructions	7
8. Parapet Clamp as Tieback Device	8
9. Parapet Clamp as Lifeline Anchorage	9
10. Labels	10



GENERAL WARNING - Read First



**Safety is a matter of life or death for riggers, operators and by-standers.
This warning is your share of duties for achieving safety.**

Your duty to understand and comply:

1. It is imperative for safety and efficiency of operations that this manual be read and fully understood by the rigger and the operator before rigging and using this equipment. All instructions contained herein must be carefully and strictly followed, including applicable Bee Access guidelines.
2. Should you hand over this equipment under any conditions, to any party operating out of your control, you must attach a clean copy of this manual and draw to other party's attention that strictly following all the instructions therein is a matter of life or death.
3. Before using this equipment, the rigger and the operator must become aware of all requirements of federal, state, provincial and local safety regulations, applicable to the entire suspended scaffold system and any component of it.
4. Never load this equipment above its rated load of **1500 lb.**
5. Bee Access declines any responsibility for any special layouts, rigging or structural combinations beyond the descriptions of this manual.
6. Bee Access declines any responsibility for any other use of this equipment, than described in this manual.

Your duty to inspect and maintain:

7. Keep this manual available at all times for easy reference whenever required. Extra copies are available from Bee Access and/or your equipment supplier.
8. Carefully take notice of all labels affixed to the equipment. Never rig or operate this equipment if any label, normally fixed on it is obscured or missing. Replacement labels are available from Bee Access and/or your equipment supplier.
9. Every time the suspended scaffold is to be rigged or used, check that the Tieback Anchor, rigging, hoists, platform and other components are complete and in good working condition, prior to proceeding. All wire ropes and safety lines and their protective sleeves should be inspected at the beginning of every shift. Check for wear and abrasion due to contact with rigging equipment and/or the building structure.
10. **A daily inspection before use is to be carried out by the rigger/operator.** Thoroughly check overall condition for bent, damaged or worn parts. Check for broken welds and excessive rust. Make sure bolts are tight. A signed and dated inspection record should be maintained for these purposes.
11. Make sure to comply with inspection and maintenance guidelines of all other components used in the suspended scaffold system.
12. Bee Access declines any responsibility for consequences of repairs or modifications brought out of its control to the product, specifically by replacement of original parts or repairs by another manufacturer.

Your duty to train and control people:

- Compliance with safety rules extends to rigging operations which must be carried out only after securing safe conditions of operation as per safety regulations and requirements.
13. An operator must not be assigned to rigging, de-rigging, moving or operating a suspended scaffold if that person is not:
 - a. Mentally and physically fit for the purpose, especially at heights
 - b. Competent for the job to be performed
 - c. Familiar with the scaffold equipment as rigged
 - d. Professionally trained for working under the above requirements
 14. Never let the equipment be moved or operated by unauthorized personnel. Keep the equipment, either rigged or unrigged, out of reach of unauthorized persons, while out of operation.
 15. Every suspended job must be placed under the control of a person having the required competence and authority for checking that all the instructions prescribed by this manual be regularly and efficiently carried out.

Your duty to safety of the entire scaffold system:

- A suspended scaffold system is made up of numerous pieces of equipment; all of these components can contribute to the required safety only if:
16. Other components meet the requirements of the applicable safety regulations and requirements, are of the proper quality, assembled to form a safe and efficient suspended system and compatibility is approved by Bee Access.
 17. The supporting structure and tie-backs can withstand every load to be applied, either static or dynamic, during rigging or operating of the suspended scaffold equipment.
 18. All the requirements in strength and resistance are obtained with the necessary safety coefficients (call your supplier for regulations and professional standards).
 19. All the calculations, design and subsequent work necessary to meet the above requirements have been made by a competent person on the basis of proper technical information regarding the site.

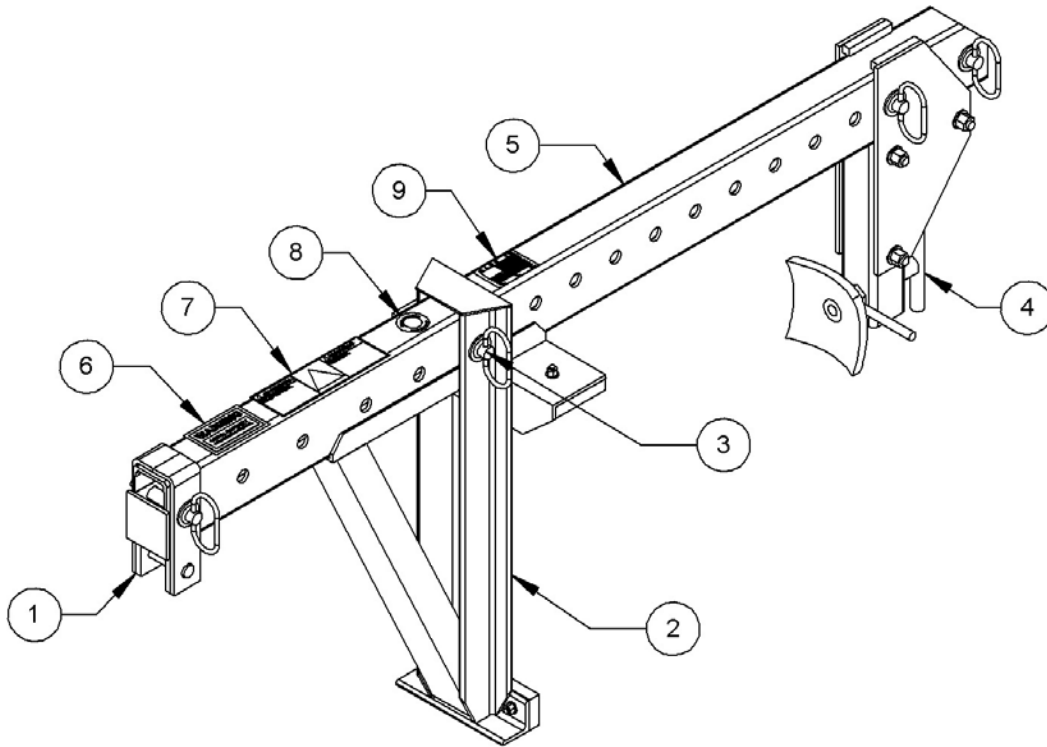
NOTE: This manual is neither a regulations compliance manual nor a general training guide on suspended scaffold operations. You must refer to proper instructions delivered by your supplier of the other pieces of equipment included in your suspended scaffold installation. Whenever calculations and specific rigging and handling are involved, the operator should be professionally trained to that end and secure relevant information prior to commencing such work.

Read and comply with the "Code of Safe Practices for Suspended Powered Scaffolds" issued by the Scaffold Industry Association (also available from Bee Access or your supplier).



Aluminum Parapet Clamp

Parts List

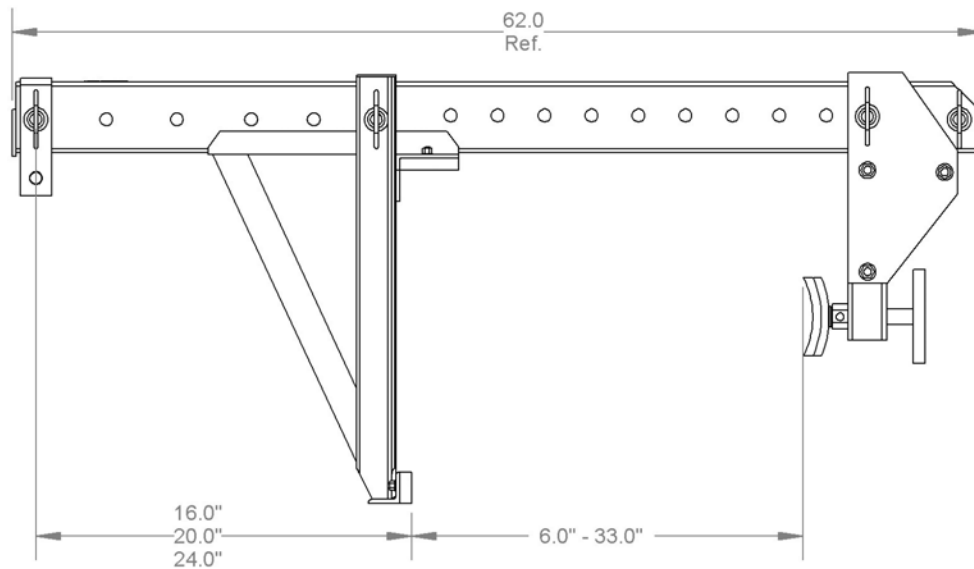
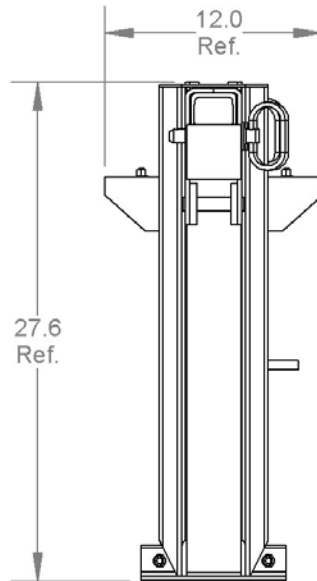


ITEM No.	QTY.	PART No.	DESCRIPTION
1	1	920152-01	Hanger Strap, Alu. Parapet Clamp
2	1	920152-03	Front Support, Alu. Parapet Clamp
3	4	110111	Hitch Pin 3/4" X 4.0"
4	1	920152-04	Rear Crank Assembly
5	1	920152-07	Parapet Clamp Beam Weldment
6	1	822102	Label, "1500 lb. Load Cap..."
7	1	WL-FALL	Warning Label, Fall Hazard
8	1	LB-BEE-S	Label - Bee Access, Small
9	1	LB-USE3	Label, USA-3"



Aluminum Parapet Clamp

Dimensions

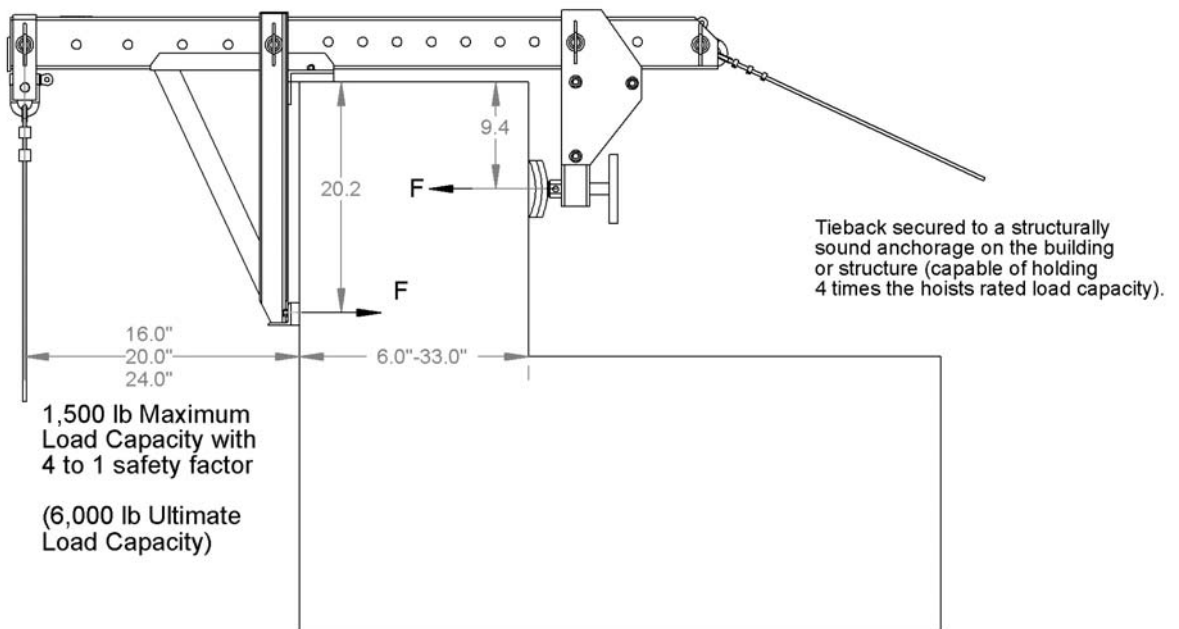




Aluminum Parapet Clamp

Parapet Loads

This parapet clamp has been designed and tested for a 1500 lb load including 4:1 safety factor and meets or exceeds current OSHA and ANSI standards pertaining to single and multiple point suspended scaffolding.



WARNING:

- Any installation of this equipment other than in strict accordance with these instructions shall be at the Operator's risk and may result in death or serious injury.
- It is the users responsibility to ensure that the structure on which the clamp is mounted will support the working load with a 4 to 1 safety factor.
- Make sure the warning labels are present and legible.
- Never attach more than one piece of equipment to the clamp.
- Do not alter the product and never use it for purposes in which it was not intended.
- Inspect all equipment before use.
- Never use damaged equipment.

When using a 1,000 lb rated hoist at a 24" outreach:

$$F = 24" \times 1,000 \text{ lb} / (20.2" - 9.4") = 2,222 \text{ lb working load} \\ (8,889 \text{ lb incl. safety factor})$$

Working Load (F):		
Outreach (in)	1,000 lb Rated Hoist	1,500 lb Rated Hoist
16.0"	1,481 lb	2,222 lb
20.0"	1,852 lb	2,778 lb
24.0"	2,222 lb	3,333 lb



Aluminum Parapet Clamp

Installation Instructions

Tools Required:

- None

NOTE:

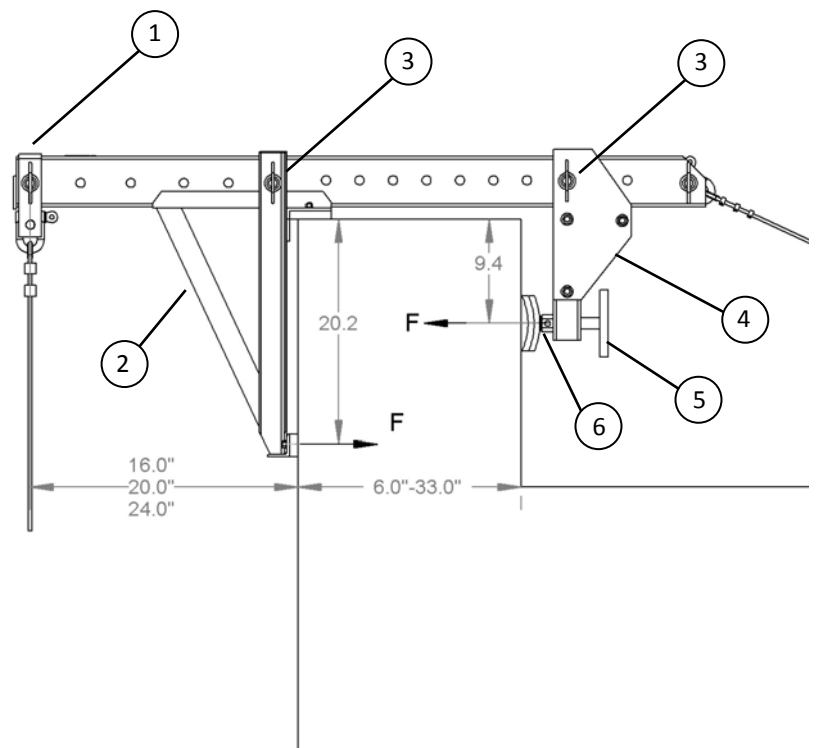
Assembly and installation must be performed or supervised by a trained and competent person. Read and fully understand these instructions before proceeding with assembly/installation.

Installation Instructions:

1. Determine the outreach required and position the Front Support (#2) and/or Hanger Strap (#1) accordingly. Lock into place with the 3/4" Hitch Pin (#3). Be sure to install the locking clip.
2. Verify that the parapet wall can withstand Working Load "F" from page 6 with a 4 to 1 safety factor.
3. Back off the Crank Screw (#5) on the Rear Crank Assy. (#4) and adjust it to fit the width of the parapet wall. Lock into place with the 3/4" Hitch Pin (#3). Be sure to install the locking clip.
4. Determine the final position of the clamp onto the parapet wall so the wire ropes are plumb with the platform stirrups below. Tighten the Crank Screw (#5). No more than hand tightening is necessary, but when using tools to tighten, do not torque the screw crank more than 30 lb.ft.
5. Hand tighten the Jam Nut (#6) to prevent the Crank Screw from loosening.
6. Attach the tieback cable to the back Hitch Pin of the Parapet Clamp. Use a wire rope with equal or greater breaking strength than the suspension wire rope. Tie back to a structure capable of supporting 4 times the hoist rated load capacity. Take up any slack by tensioning the tieback by hand, do not use any mechanical advantage.
7. Attach the suspension wire rope and carefully lower it to avoid kinks.

! WARNING:

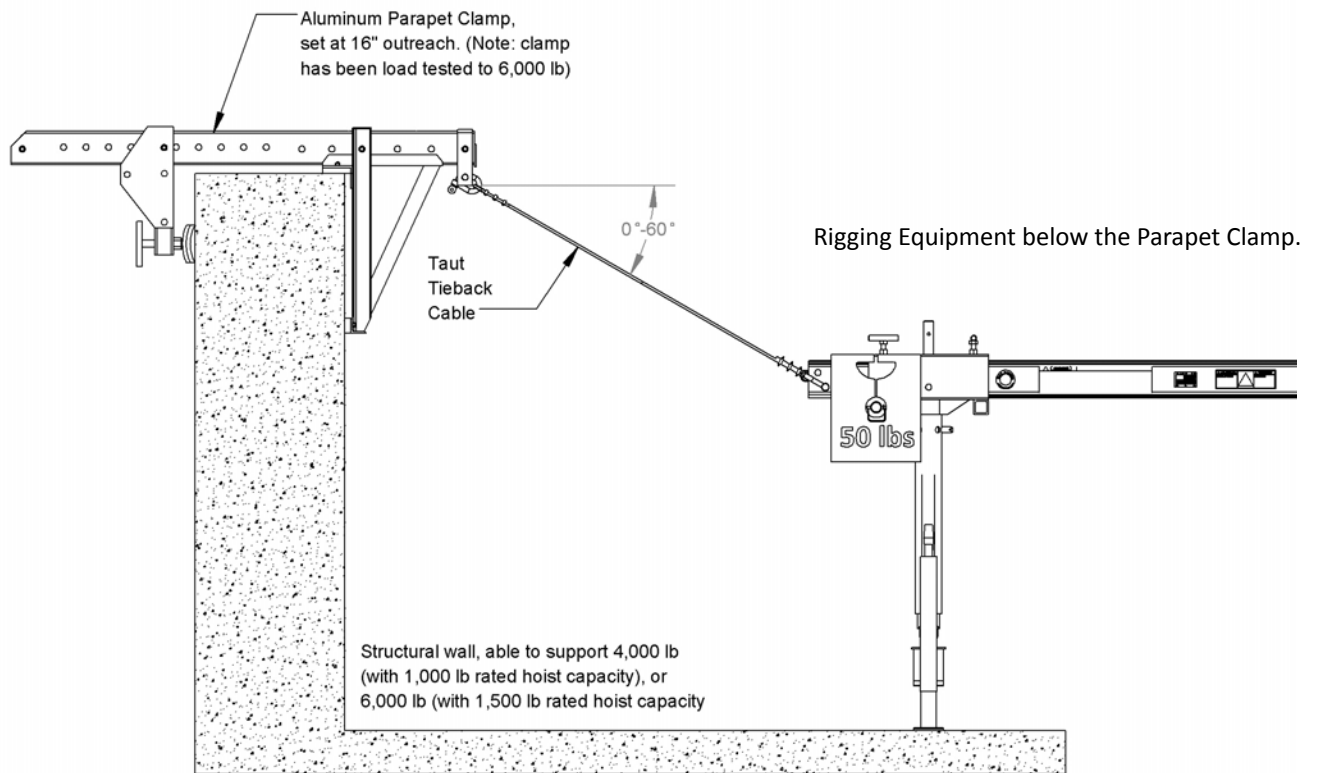
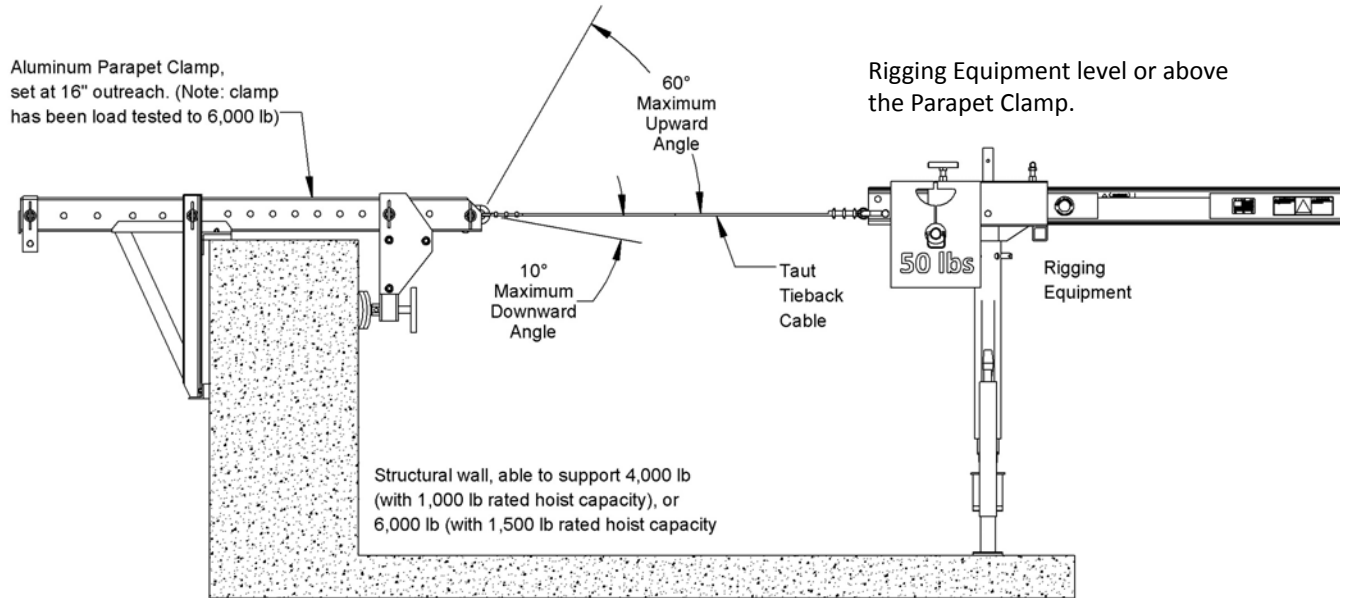
- Any installation of this equipment other than in strict accordance with these instructions shall be at the Operator's risk and may result in death or serious injury.
- It is the users responsibility to ensure that the structure on which the clamp is mounted will support the working load with a 4 to 1 safety factor.
- Make sure the warning labels are present and legible.
- Never attach more than one piece of equipment to the clamp.
- Do not alter the product and never use it for purposes in which it was not intended.
- Inspect all equipment before use.
- Never use damaged equipment.





Aluminum Parapet Clamp

Parapet Clamp as Tieback Device (NOT allowed in Canada)





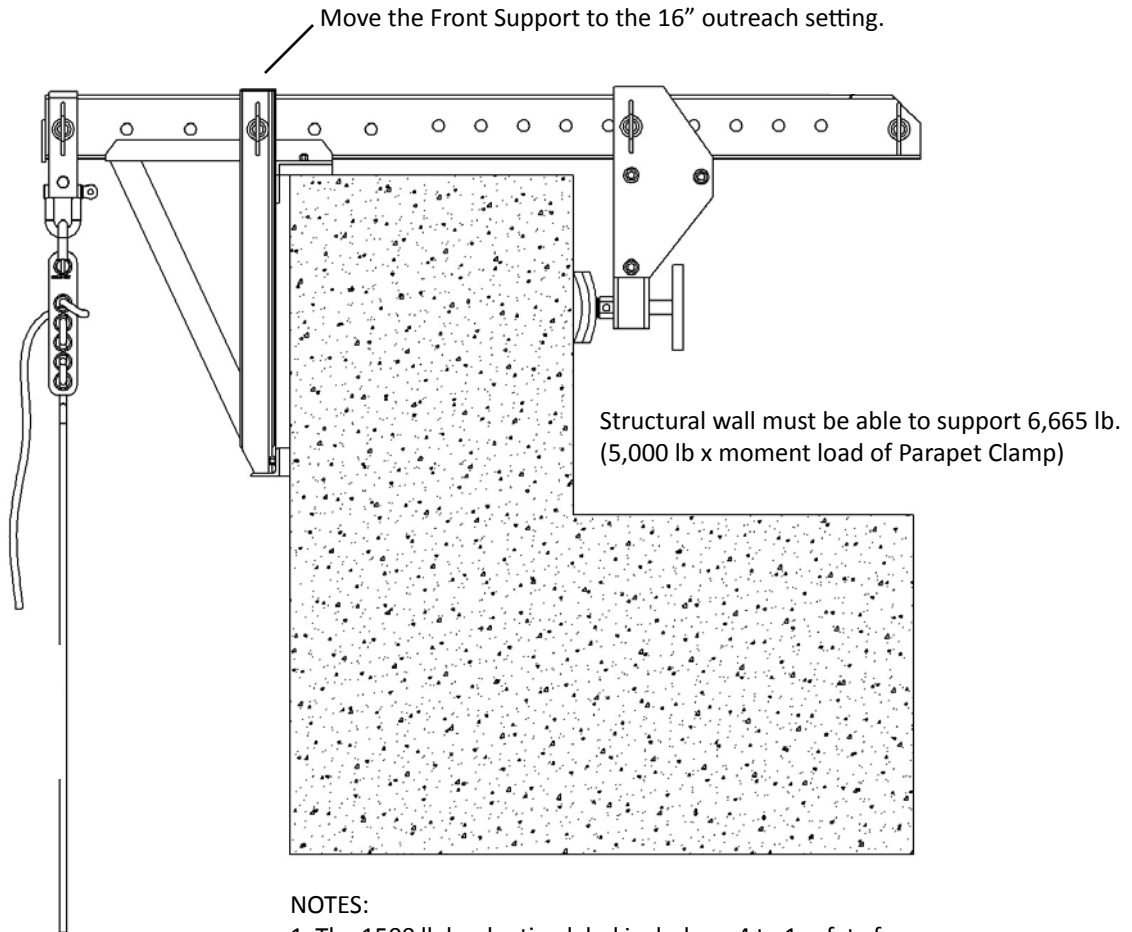
Aluminum Parapet Clamp

Parapet Clamp as Lifeline Anchorage (Where allowed by local regulations)

There are 2 options to attach a lifeline to a parapet clamp:

1. Connect a spliced lifeline with a shackle
2. Use a HOLD-ME® lifeline anchor (as shown)

DO NOT tie a knot, per ANSI standard Z359.1 paragraph 3.2.7.2.2



NOTES:

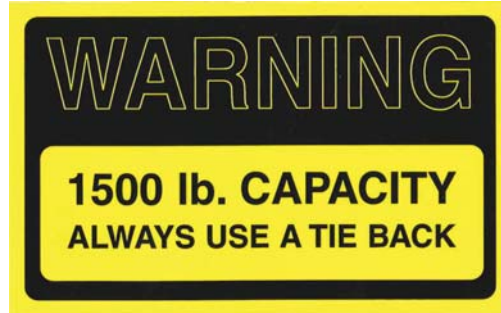
1. The 1500 lb load rating label includes a 4 to 1 safety factor per OSHA and ANSI standards pertaining to powered suspended scaffolding. They have been tested to 6000 lb ultimate load. Therefore, all Bee Access parapet parapet clamps rated for 1500 lb are approved for use with lifelines as they exceed the 5000 lb anchor load requirements per ANSI standard Z359.1 paragraph 7.2.3 and 7.2.4.
2. Tieback is optional, but not required.



Aluminum Parapet Clamp

Labels

822102 Label, "1500 lb Capacity..."



WL-FALL Warning Label, Fall Hazard

<p>⚠ ADVERTENCIA</p> <p>Riesgo de Caída. Fallas en la instalación o uso de este producto pueden resultar en muerte o lesiones graves. Siga los procedimientos recomendados por el fabricante. Los sistemas de andamios suspendidos deben ser instalados y desmontados por o bajo la supervisión de una persona entrenada y competente. No altere este producto o cualquiera de sus componentes y nunca lo use para propósitos o de manera para la cual no han sido diseñados. Inspeccionar todo el equipo antes de cada uso. Nunca use equipo dañados.</p>	 <p>www.beeaccess.com part# WL-FALL</p>	<p>⚠ WARNING</p> <p>Fall Hazard. Failure to properly install and use this product may result in death or serious injury. Follow the manufacturer's recommended procedures. Suspended Scaffold Systems must be installed and dismantled by, or under the supervision of, a trained and competent person. Do not alter this product and never use it for purposes or in ways for which it was not intended. Inspect all equipment before each use. Never use damaged equipment.</p>
--	--	---

LB-BEE-M Label - Bee Access, Medium



LB-USE3 Label, USE-3"

